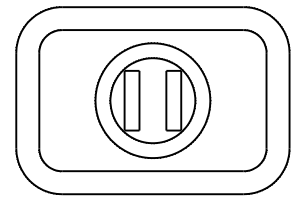
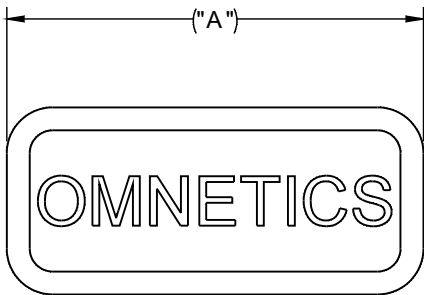
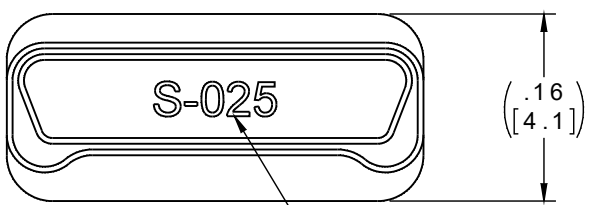
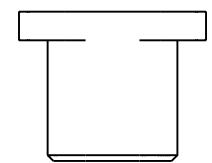
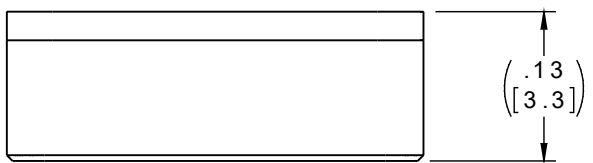


PART NO.	D 6911-0XX	REV	ECO	DATE	APP
		B	99321	03-04-13	TLM



OMNETICS LOGO  
REPLACES NAME ON  
THE 9, 15 AND 21  
POSITION CAPS

  
ACTUAL SIZE  
(D6911-025 SHOWN)



PART NO.	"A" (IN)	"A" [m m]
D 6911-009	.16	4.1
D 6911-015	.24	6.1
D 6911-021	.31	7.9
D 6911-025	.36	9.1
D 6911-031	.44	11.2
D 6911-037	.51	13.0
D 6911-051	.69	17.5
D 6911-065	.86	21.8



NOTE:

MATERIAL: CONDUCTIVE  
POLYETHYLENE

COLOR: BLACK

DIMENSIONS IN [ ] ARE IN  
MILLIMETERS UNLESS  
OTHERWISE NOTED AND ARE  
FOR REFERENCE ONLY

SHEET 2 FOR  
MANUFACTURING PURPOSES  
ONLY

MDS	THIRD ANGLE 	THIS DRAWING CONTAINS CONFIDENTIAL AND PROPRIETARY INFORMATION WHICH IS THE PROPERTY OF OMNETICS CONNECTOR CORP. THIS DOCUMENT MAY NOT, IN WHOLE OR IN PART, BE DUPLICATED, OR DISCLOSED FOR ANY PURPOSE, WITHOUT WRITTEN PERMISSION FROM OMNETICS CONNECTOR CORP.		TITLE: DUST CAP, Bi-Lobe®, FEMALE BLACK, CONDUCTIVE	 CONNECTOR CORPORATION 7260 COMMERCE CIRCLE EAST MINNEAPOLIS, MN 55432 WWW.OMNETICS.COM	CAGE CODE 61873	
	-TOLERANCES- UNLESS OTHERWISE NOTED					DFTM. MJM	DATE 03-30-12
	DIMENSIONS IN INCHES	CHK'D.	DATE	SHEET 1 OF 2			
	2 P L DEC ± .01 3 P L DEC ± .005 4 P L DEC ± .0005 ANGLES ± 1°	APP'D.	DATE	REV B			
						SCALE: 6:1	