

PART NO.	A44200-025	REV	ECO	DATE	APP
		A	103653	07-2917	TLM

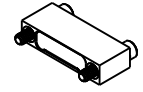
MATERIAL:

SHELL:

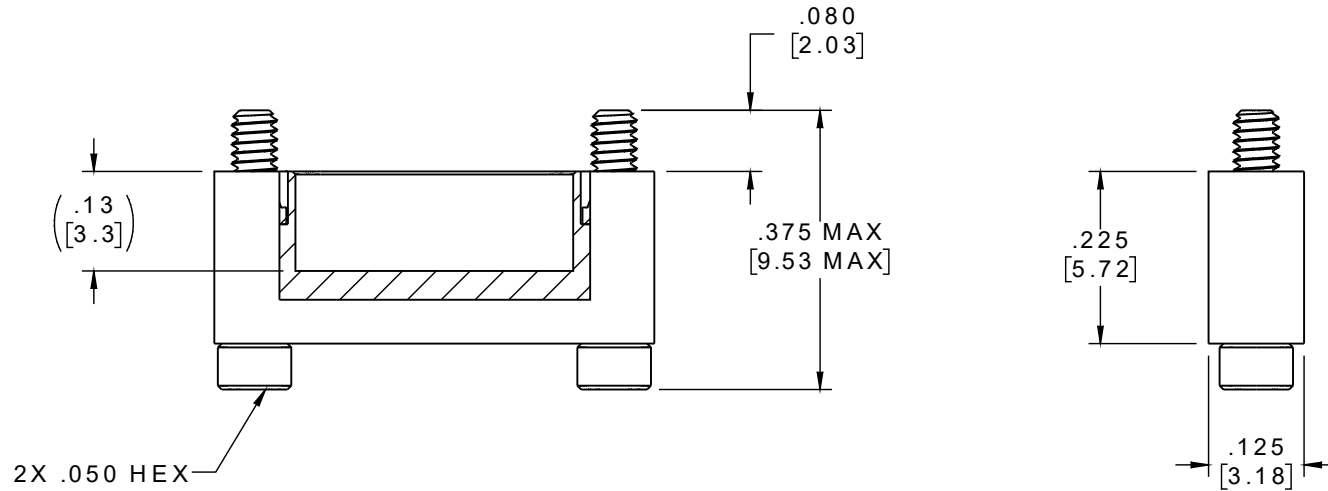
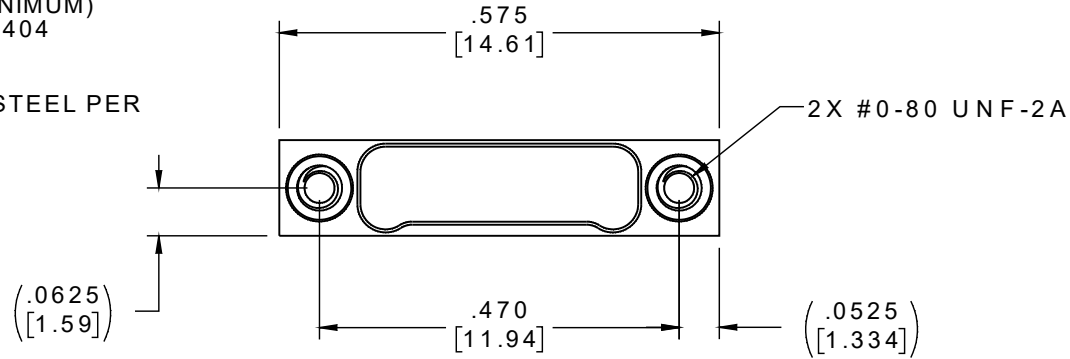
ALUMINUM 6061-T6,
NICKEL PLATE (500
MICROINCHES MINIMUM)
PER SAE-AMS-2404

HARDWARE:

303 STAINLESS STEEL PER
ASTM 582



ACTUAL SIZE



NOTE:

DIMENSIONS IN [] ARE IN
MILLIMETERS UNLESS
OTHERWISE NOTED AND ARE
FOR REFERENCE ONLY

ASDW	THIRD ANGLE	THIS DRAWING CONTAINS CONFIDENTIAL AND PROPRIETARY INFORMATION WHICH IS THE PROPERTY OF OMNETICS CONNECTOR CORP. THIS DOCUMENT MAY NOT, IN WHOLE OR IN PART, BE DUPLICATED, OR DISCLOSED FOR ANY PURPOSE, WITHOUT WRITTEN PERMISSION FROM OMNETICS CONNECTOR CORP.		
	-TOLERANCES- UNLESS OTHERWISE NOTED	DFTM. TLM	DATE	TITLE:
	DIMENSIONS IN INCHES	CHK'D.	DATE	DUST COVER MALE Bi-Lobe® (25) POSITION
	2 PL DEC ± .01 3 PL DEC ± .005 4 PL DEC ± .0005 ANGLES ± 1°	APP'D.	DATE	

OMNETICS
CONNECTOR CORPORATION
7260 COMMERCE CIRCLE EAST
MINNEAPOLIS, MN 55432
WWW.OMNETICS.COM

CAGE CODE 61873	
DWG NO. A44200-025	
SHEET 1 OF 1	REV A
SCALE: 4:1	