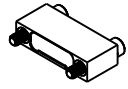


PART NO.	A44200-021	REV	ECO	DATE	APP
		A	103653	07-29-17	TLM

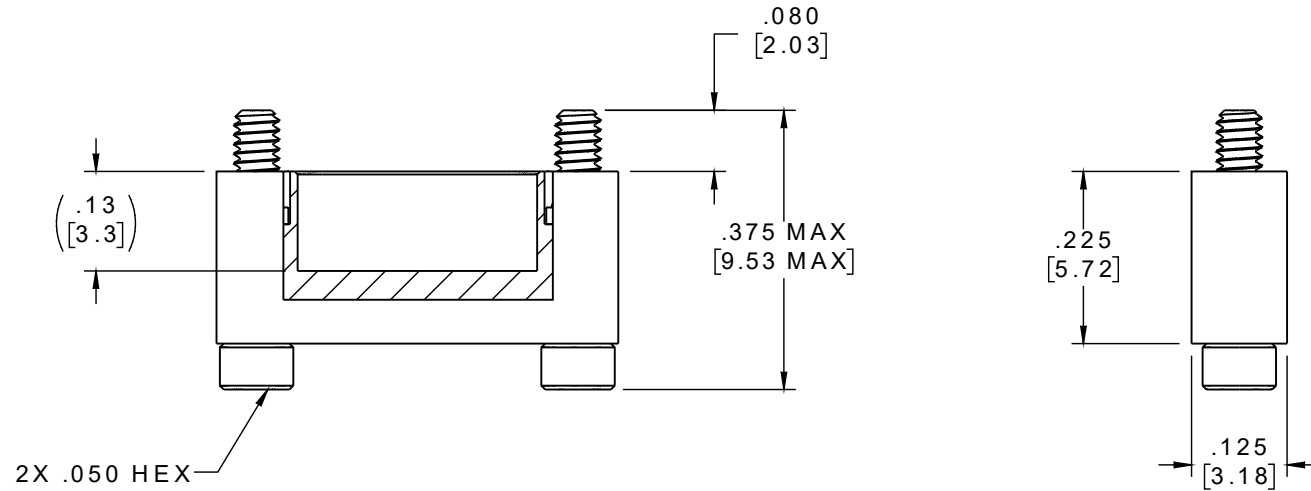
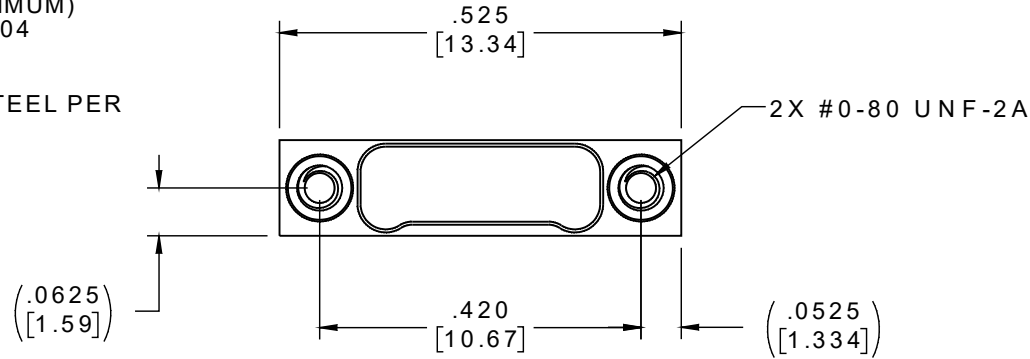
**MATERIAL:**

**SHELL:**  
 ALUMINUM 6061-T6,  
 NICKEL PLATE (500  
 MICROINCHES MINIMUM)  
 PER SAE-AMS-2404

**HARDWARE:**  
 303 STAINLESS STEEL PER  
 ASTM 582



ACTUAL SIZE



**NOTE:**

DIMENSIONS IN [ ] ARE IN MILLIMETERS UNLESS OTHERWISE NOTED AND ARE FOR REFERENCE ONLY

ASD/MS	THIRD ANGLE
	-TOLERANCES-
	UNLESS OTHERWISE NOTED
	DIMENSIONS IN INCHES
	2 PL DEC ± .01
	3 PL DEC ± .005
	4 PL DEC ± .0005
	ANGLES ± 1°

THIS DRAWING CONTAINS CONFIDENTIAL AND PROPRIETARY INFORMATION WHICH IS THE PROPERTY OF OMNETICS CONNECTOR CORP. THIS DOCUMENT MAY NOT, IN WHOLE OR IN PART, BE DUPLICATED, OR DISCLOSED FOR ANY PURPOSE, WITHOUT WRITTEN PERMISSION FROM OMNETICS CONNECTOR CORP.	
DFTM. TLM	DATE 07-10-17
CHK'D.	DATE
APP'D.	DATE
TITLE: DUST COVER MALE Bi-Lobe® (21) POSITION	

**OMNETICS**  
 CONNECTOR CORPORATION  
 7260 COMMERCE CIRCLE EAST  
 MINNEAPOLIS, MN 55432  
 WWW.OMNETICS.COM

CAGE CODE 61873	
DWG NO. A44200-021	
SHEET 1 OF 1	REV A
SCALE: 4:1	