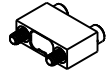


PART NO.	A 44200-009	REV	ECO	DATE	APP
		A	103653	07-29-17	TLM

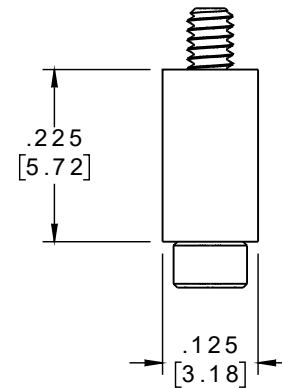
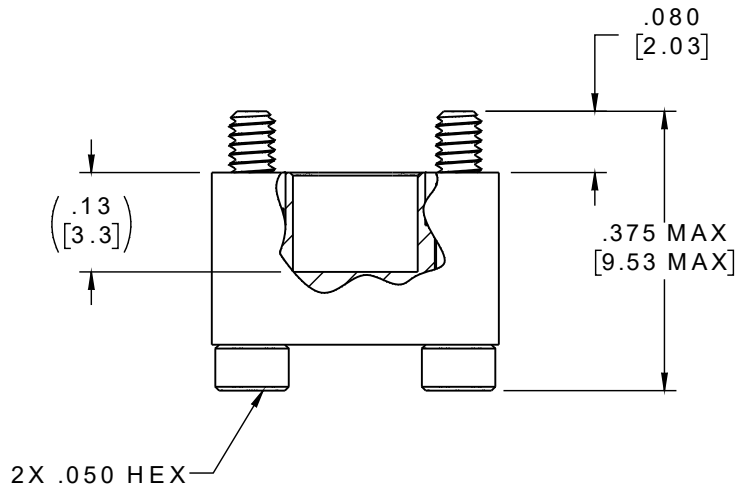
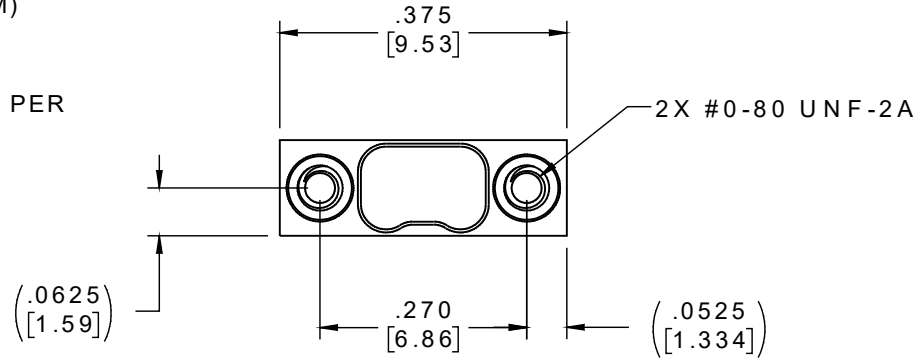
MATERIAL:

SHELL:
 ALUMINUM 6061-T6,
 NICKEL PLATE (500
 MICROINCHES MINIMUM)
 PER SAE-AMS-2404

HARDWARE:
 303 STAINLESS STEEL PER
 ASTM 582



ACTUAL SIZE



NOTE:

DIMENSIONS IN [] ARE IN MILLIMETERS UNLESS OTHERWISE NOTED AND ARE FOR REFERENCE ONLY

DIM'S	THIRD ANGLE
	-TOLERANCES-
	UNLESS OTHERWISE NOTED
	DIMENSIONS IN INCHES
	2 PL DEC ± .01
	3 PL DEC ± .005
	4 PL DEC ± .0005
	ANGLES ± 1°

THIS DRAWING CONTAINS CONFIDENTIAL AND PROPRIETARY INFORMATION WHICH IS THE PROPERTY OF OMNETICS CONNECTOR CORP. THIS DOCUMENT MAY NOT, IN WHOLE OR IN PART, BE DUPLICATED, OR DISCLOSED FOR ANY PURPOSE, WITHOUT WRITTEN PERMISSION FROM OMNETICS CONNECTOR CORP.	
DFTM. TLM	DATE 07-06-17
CHK'D.	DATE
APP'D.	DATE
TITLE: DUST COVER MALE Bi-Lobe® (9) POSITION	

OMNETICS
 CONNECTOR CORPORATION
 7260 COMMERCE CIRCLE EAST
 MINNEAPOLIS, MN 55432
 WWW.OMNETICS.COM

CAGE CODE 61873	
DWG NO. A44200-009	
SHEET 1 OF 1	REV A
SCALE: 4:1	