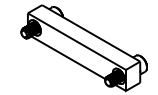


| | | | | | |
|----------|------------|-----|--------|----------|-----|
| PART NO. | A42031-037 | REV | ECO | DATE | APP |
| | | B | 104514 | 05-30-18 | TLM |

MATERIALS

HOUSING:

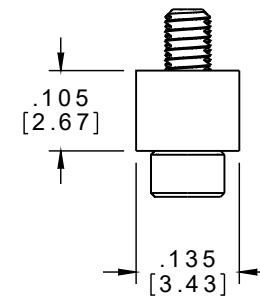
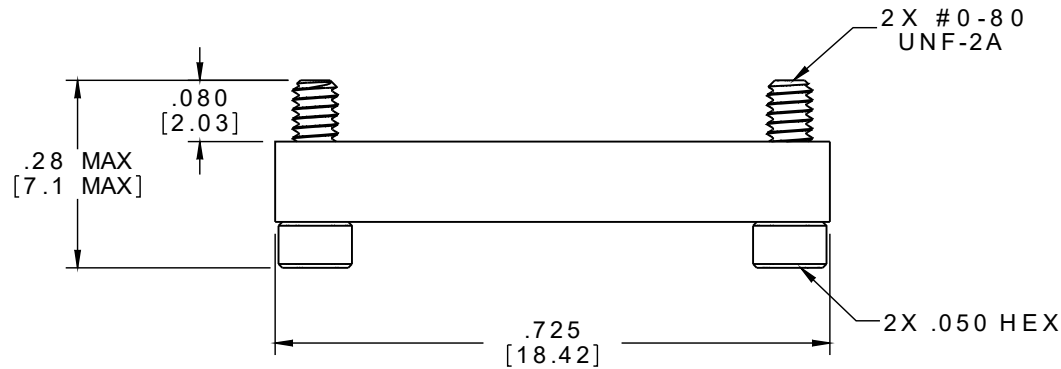
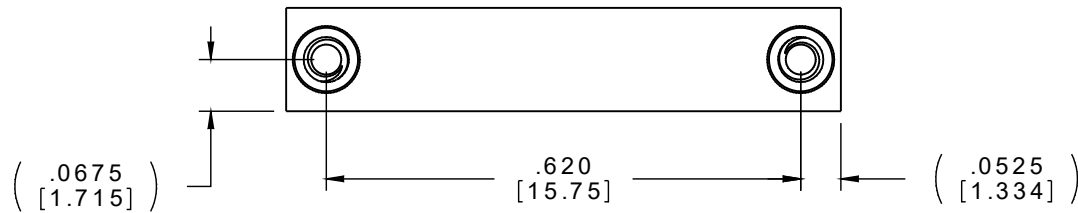
ALUMINUM 6061, NICKEL
PLATED (500 MICRONS
MINIMUM) PER SAE-AMS-2404.



ACTUAL SIZE

HARDWARE:

303 STAINLESS STEEL PER
ASTM A582



NOTE:

DIMENSIONS IN [] ARE IN
MILLIMETERS UNLESS
OTHERWISE NOTED AND ARE
FOR REFERENCE ONLY

| | | | |
|--------|--|--|---------------|
| SUNVIS | THIRD ANGLE | THIS DRAWING CONTAINS CONFIDENTIAL AND PROPRIETARY INFORMATION WHICH IS THE PROPERTY OF OMNETICS CONNECTOR CORP. THIS DOCUMENT MAY NOT, IN WHOLE OR IN PART, BE DUPLICATED, OR DISCLOSED FOR ANY PURPOSE, WITHOUT WRITTEN PERMISSION FROM OMNETICS CONNECTOR CORP. | |
| | -TOLERANCES- UNLESS OTHERWISE NOTED | DFTM. DGJ | DATE 11-01-12 |
| | DIMENSIONS IN INCHES | CHK'D. | DATE |
| | 2 PL DEC ± .01 3 PL DEC ± .005 4 PL DEC ± .0005 ANGLES ± 1° | APP'D. | DATE |
| | | TITLE: DUST COVER FEMALE Bi-Lobe® (37) POSITION | |

OMNETICS
CONNECTOR CORPORATION
7260 COMMERCE CIRCLE EAST
MINNEAPOLIS, MN 55432
WWW.OMNETICS.COM

| | |
|--------------------|-------|
| CAGE CODE 61873 | |
| DWG NO. A42031-037 | |
| SHEET 1 OF 1 | REV B |
| SCALE: 4:1 | |