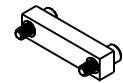


PART NO.	A42031-025	REV	ECO	DATE	APP
		B	104514	05-30-18	TLM

MATERIALS

HOUSING:

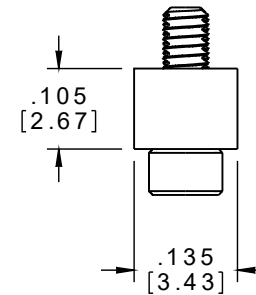
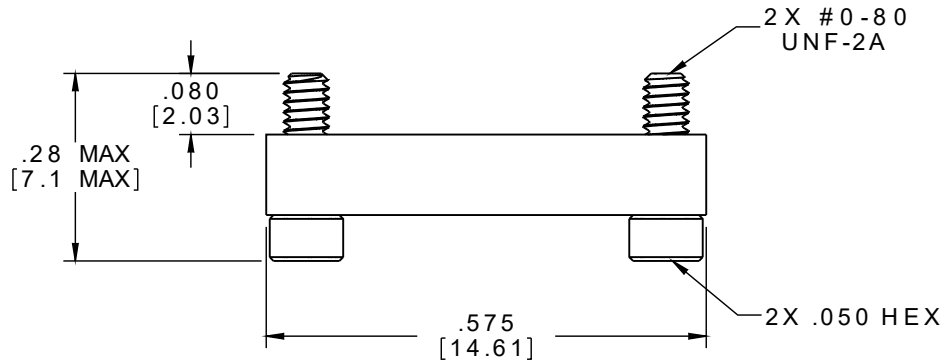
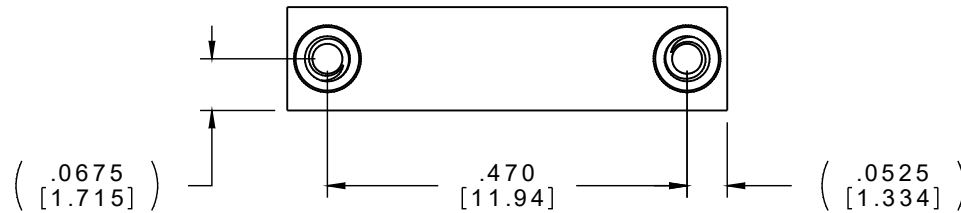
ALUMINUM 6061, NICKEL
PLATED (500 MICROINCHES
MINIMUM) PER SAE-AMS-2404.



ACTUAL SIZE

HARDWARE:

303 STAINLESS STEEL PER
ASTM A582



NOTE:

DIMENSIONS IN [] ARE IN
MILLIMETERS UNLESS
OTHERWISE NOTED AND ARE
FOR REFERENCE ONL

MFG	THIRD ANGLE	THIS DRAWING CONTAINS CONFIDENTIAL AND PROPRIETARY INFORMATION WHICH IS THE PROPERTY OF OMNETICS CONNECTOR CORP. THIS DOCUMENT MAY NOT, IN WHOLE OR IN PART, BE DUPLICATED, OR DISCLOSED FOR ANY PURPOSE, WITHOUT WRITTEN PERMISSION FROM OMNETICS CONNECTOR CORP.		
	-TOLERANCES-	DFTM. DGJ	DATE 11-01-12	TITLE: DUST COVER
	UNLESS OTHERWISE NOTED	CHK'D.	DATE	FEMALE Bi-Lobe®
	DIMENSIONS IN INCHES	APP'D.	DATE	(25) POSITION
	2 PL DEC ± .01			
	3 PL DEC ± .005			
	4 PL DEC ± .0005			
	ANGLES ± 1°			

OMNETICS
CONNECTOR CORPORATION
7260 COMMERCE CIRCLE EAST
MINNEAPOLIS, MN 55432
WWW.OMNETICS.COM

CAGE CODE 61873	
DWG NO. A42031-025	
SHEET 1 OF 1	REV B
SCALE: 4:1	