

MATERIALS

PART NO.	A42031-009	REV	ECO	DATE	APP
		B	104514	05-30-18	TLM

HOUSING:

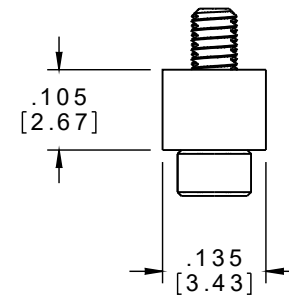
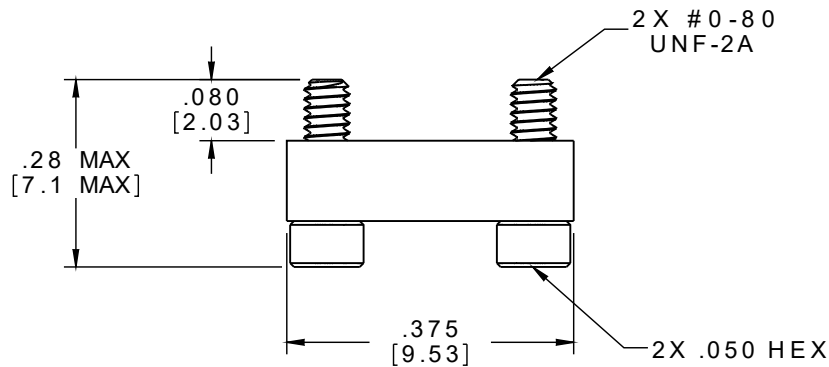
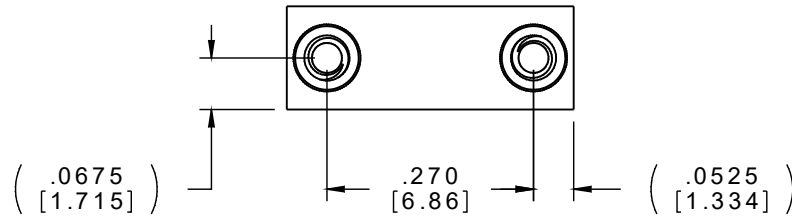
ALUMINUM 6061, NICKEL
PLATED (500 MICROINCHES
MINIMUM) PER SAE-AMS-2404.



ACTUAL SIZE

HARDWARE:

303 STAINLESS STEEL PER
ASTM A582



NOTE:

DIMENSIONS IN [] ARE IN
MILLIMETERS UNLESS
OTHERWISE NOTED AND ARE
FOR REFERENCE ONLY

SHEET	THIRD ANGLE	THIS DRAWING CONTAINS CONFIDENTIAL AND PROPRIETARY INFORMATION WHICH IS THE PROPERTY OF OMNETICS CONNECTOR CORP. THIS DOCUMENT MAY NOT, IN WHOLE OR IN PART, BE DUPLICATED, OR DISCLOSED FOR ANY PURPOSE, WITHOUT WRITTEN PERMISSION FROM OMNETICS CONNECTOR CORP.		OMNETICS CONNECTOR CORPORATION 7260 COMMERCE CIRCLE EAST MINNEAPOLIS, MN 55432 WWW.OMNETICS.COM	CAGE CODE 61873		
	-TOLERANCES-	DFTM. DGJ	DATE 11-01-12		TITLE: DUST COVER	DWG NO. A42031-009	
	UNLESS OTHERWISE NOTED	CHK'D.	DATE		FEMALE Bi-Lobe®	SHEET 1 OF 1	
	DIMENSIONS IN INCHES	APP'D.	DATE		(9) POSITION	REV B	SCALE: 4:1
	2 PL DEC ± .01						
	3 PL DEC ± .005						
	4 PL DEC ± .0005						
	ANGLES ± 1°						