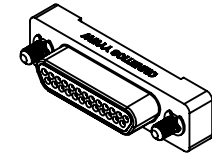
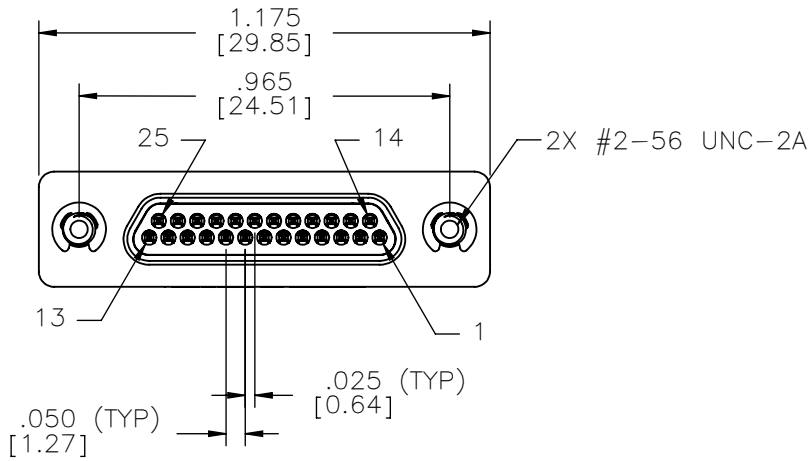
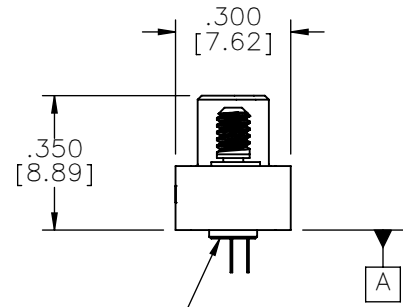
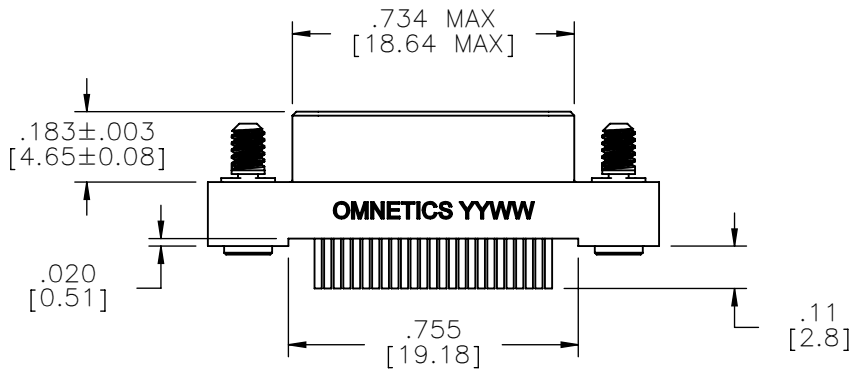


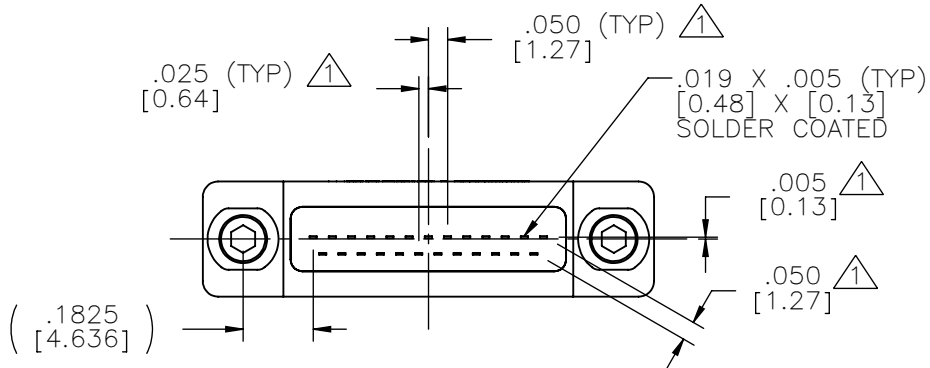
PART NO.	A98061-025	REV	ECO	DATE	APP
		B	104699	08-01-18	TLM



ACTUAL SIZE



2X 1/16 HEX



NOTE:  
 DIMENSIONS IN [ ] ARE IN MILLIMETERS UNLESS OTHERWISE NOTED AND ARE FOR REFERENCE ONLY

△ TAIL DIMENSIONS APPLY AT PLANE A

MFG	THIRD ANGLE
	- TOLERANCES -
	UNLESS OTHERWISE NOTED
	DIMENSIONS IN INCHES
2 PL DEC ± .01	
3 PL DEC ± .005	
4 PL DEC ± .0005	
ANGLES ± 1°	

THIS DRAWING CONTAINS CONFIDENTIAL AND PROPRIETARY INFORMATION WHICH IS THE PROPERTY OF OMNETICS CONNECTOR CORP. THIS DOCUMENT MAY NOT, IN WHOLE OR IN PART, BE DUPLICATED, OR DISCLOSED FOR ANY PURPOSE, WITHOUT WRITTEN PERMISSION FROM OMNETICS CONNECTOR CORP.	
DFTM. TLM	DATE 02-12-15
CHK'D.	DATE
APP'D.	DATE
TITLE: (25) PIN MALE STRAIGHT BOARD MOUNT MICRO-D CONNECTOR	

**OMNETICS**  
 CONNECTOR CORPORATION  
 7260 COMMERCE CIRCLE EAST  
 MINNEAPOLIS, MN 55432  
 WWW.OMNETICS.COM

CAGE CODE 61873
DWG NO. A98061-025
SHEET 1 OF 2
SCALE: 2:1
REV B

PART NO.	A98061-025	REV	ECO	DATE	APP
		B	104699	08-01-18	TLM

**MATERIALS**

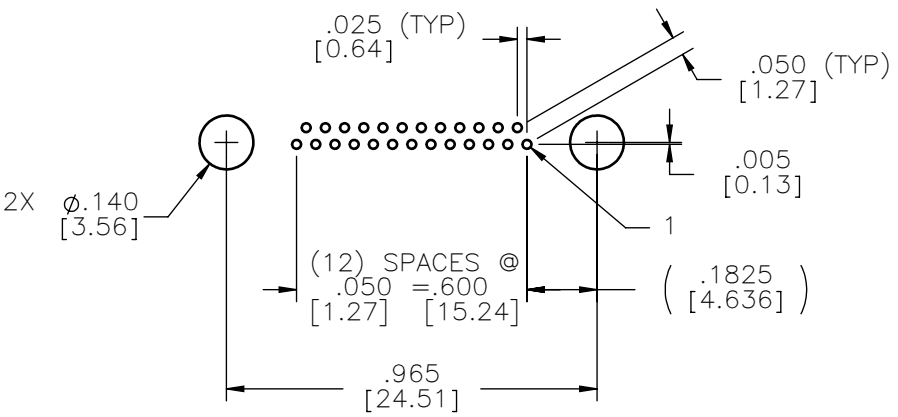
HOUSING:  
 ALUMINUM 6061, NICKEL PLATE  
 (500 MICRONS MINIMUM)  
 PER SAE-AMS-2404

INSULATOR:  
 LIQUID CRYSTAL POLYMER  
 (LCP) PER ASTM D5138

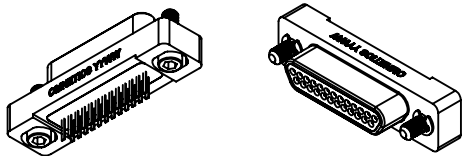
CONTACT:  
 BERYLLIUM COPPER PER ASTM  
 B194, C17200, GOLD PLATED  
 PER ASTM B488, (HARD GOLD)  
 TYPE II CODE C, CLASS 1.27

TERMINATION:  
 SOLDER COATED WITH SN63A  
 PER J-STD-006 OR AMS-P-  
 81728

HARDWARE:  
 STAINLESS STEEL, PASSIVATED  
 PER SAE-AMS-2700



SUGGESTED HOLE PATTERN



ACTUAL SIZE

NOTE:  
 DIMENSIONS IN [ ] ARE IN  
 MILLIMETERS UNLESS  
 OTHERWISE NOTED AND ARE  
 FOR REFERENCE ONLY

MGT'S	THIRD ANGLE
	-TOLERANCES-
	UNLESS OTHERWISE NOTED
	DIMENSIONS IN INCHES
2	PL DEC ± .01
3	PL DEC ± .005
4	PL DEC ± .0005
	ANGLES ± 1°

THIS DRAWING CONTAINS CONFIDENTIAL AND PROPRIETARY INFORMATION WHICH IS THE PROPERTY OF OMNETICS CONNECTOR CORP. THIS DOCUMENT MAY NOT, IN WHOLE OR IN PART, BE DUPLICATED, OR DISCLOSED FOR ANY PURPOSE, WITHOUT WRITTEN PERMISSION FROM OMNETICS CONNECTOR CORP.	
DFTM.	TLM
DATE	02-12-15
CHK'D.	
DATE	
APP'D.	
DATE	

TITLE:  
 (25) PIN MALE  
 STRAIGHT BOARD MOUNT  
 MICRO-D CONNECTOR

**OMNETICS**  
 CONNECTOR CORPORATION  
 7260 COMMERCE CIRCLE EAST  
 MINNEAPOLIS, MN 55432  
 WWW.OMNETICS.COM

CAGE CODE	61873
DWG NO.	A98061-025
SHEET 2 OF 2	REV B
SCALE:	2:1