

**MATERIALS & SPECIFICATIONS**

PART NO.	A29700-085	REV	ECO	DATE	APP
		B	102565	05-09-16	TLM

**HOUSING:**  
ALUMINUM 6061-T6,  
NICKEL PLATE PER  
SAE-AMS-2404

**INSULATOR:**  
LIQUID CRYSTAL  
POLYMER (LCP) PER  
ASTM D5138

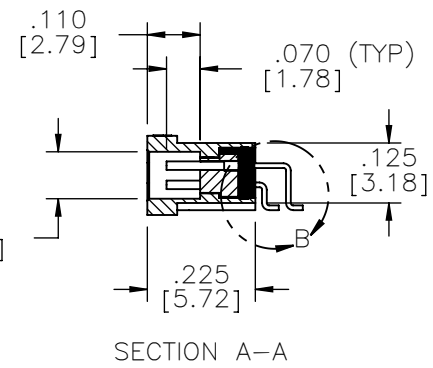
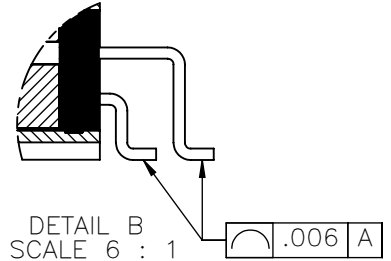
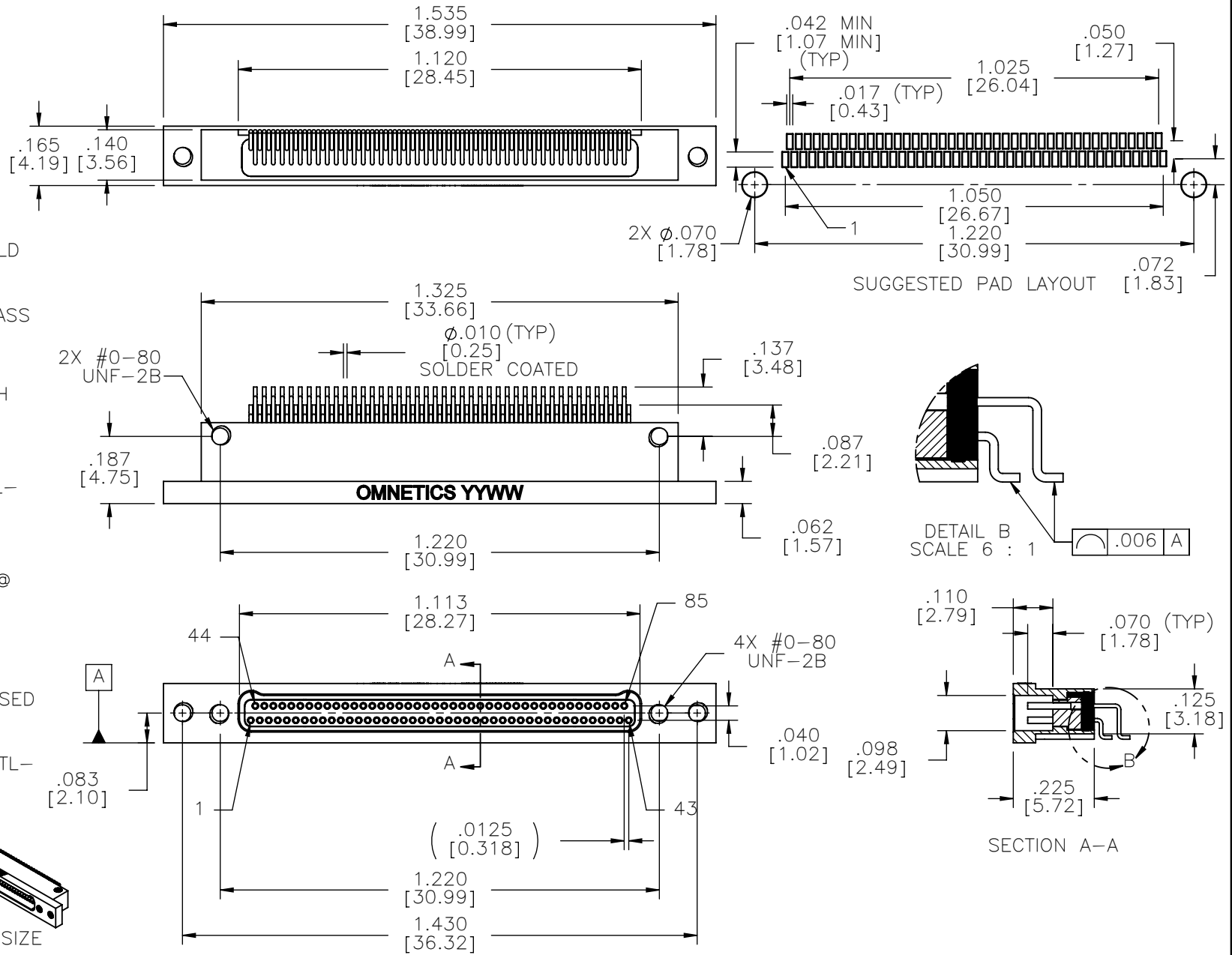
**CONTACTS:**  
COPPER ALLOY PER  
MIL-DTL-32139, GOLD  
PLATED PER ASTM  
B488, (HARD GOLD)  
TYPE II CODE C, CLASS  
1.27

**TERMINATION:**  
SOLDER COATED WITH  
SN63A  
PER J-STD-006

**CURRENT RATING:**  
1 AMP MAX PER MIL-  
DTL-32139

**CONTACT RESISTANCE:**  
71 MILLIOHM MAX  
(71mV DROP MAX) @  
1.0 AMPS PER MIL-  
DTL-32139

**PERFORMANCE:**  
PRODUCT FAMILY  
TESTED TO AND PASSED  
THE PERFORMANCE  
SPECIFICATIONS OF  
TABLE VIII OF MIL-DTL-  
32139



**NOTE:**  
DIMENSIONS IN [ ] ARE IN  
MILLIMETERS UNLESS  
OTHERWISE NOTED AND ARE  
FOR REFERENCE ONLY

MNSOP SLDW	THIRD ANGLE	THIS DRAWING CONTAINS CONFIDENTIAL AND PROPRIETARY INFORMATION WHICH IS THE PROPERTY OF OMNETICS CONNECTOR CORP. THIS DOCUMENT MAY NOT, IN WHOLE OR IN PART, BE DUPLICATED, OR DISCLOSED FOR ANY PURPOSE, WITHOUT WRITTEN PERMISSION FROM OMNETICS CONNECTOR CORP.	DATE	TITLE:
	-TOLERANCES-		07-14-11	(85) SOCKET FEMALE
	UNLESS OTHERWISE NOTED		DATE	Bi-Lobe® CONNECTOR
	DIMENSIONS IN INCHES		DATE	
2 PL DEC ± .01	DFTM. DGJ	APP'D.	DATE	
3 PL DEC ± .005	CHK'D.			
4 PL DEC ± .0005	APP'D.			
ANGLES ± 1°				

**OMNETICS**  
CONNECTOR CORPORATION  
7260 COMMERCE CIRCLE EAST  
MINNEAPOLIS, MN 55432  
WWW.OMNETICS.COM

CAGE CODE **61873**  
DWG NO. **A29700-085**  
SHEET 1 OF 1  
SCALE: 2.5:1

REV B