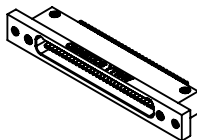
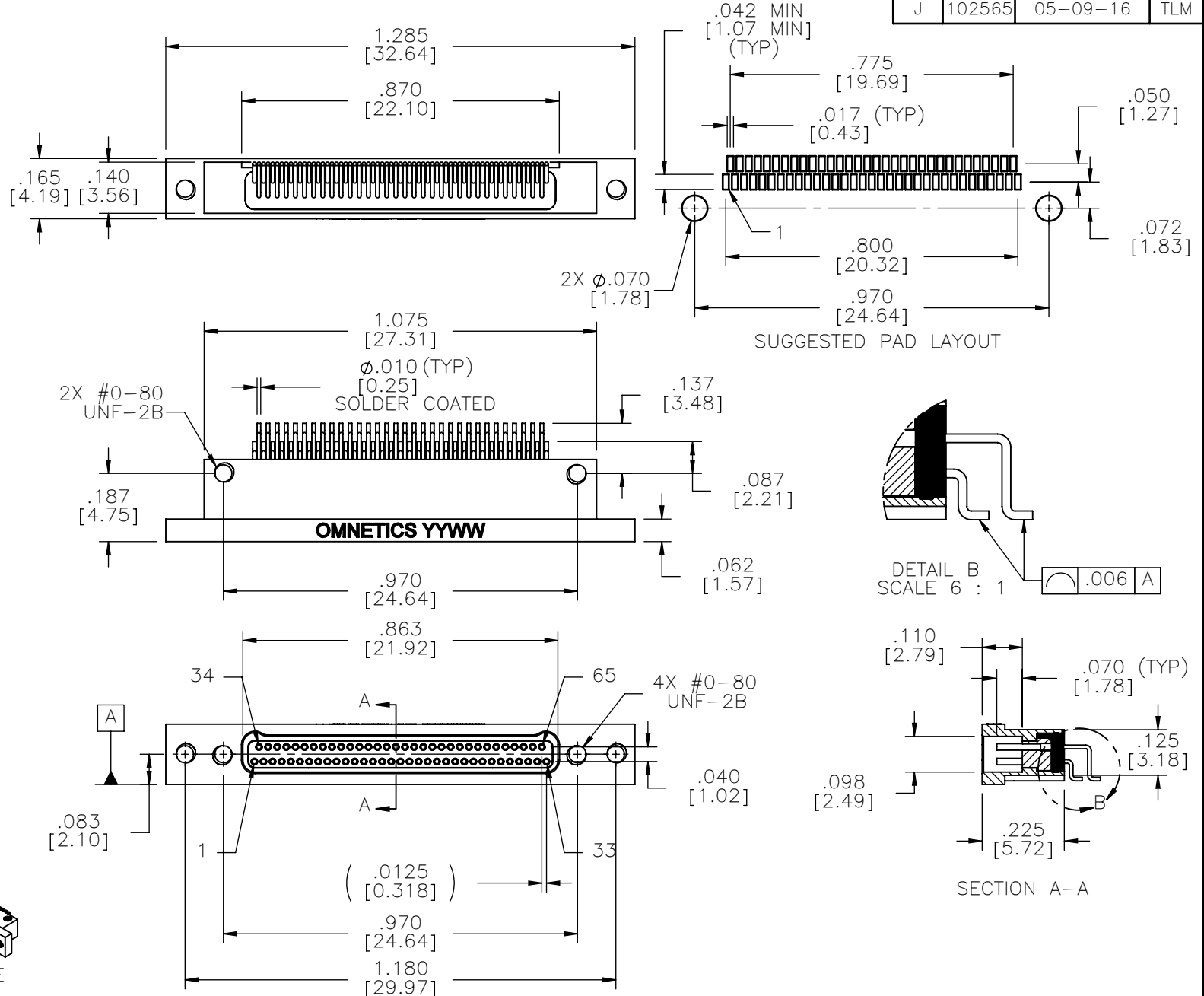


MATERIALS & SPECIFICATIONS

- HOUSING:**
ALUMINUM 6061-T6,
NICKEL PLATE PER
SAE-AMS-2404
- INSULATOR:**
LIQUID CRYSTAL
POLYMER (LCP) PER
ASTM D5138
- CONTACTS:**
COPPER ALLOY PER
MIL-DTL-32139, GOLD
PLATED PER ASTM
B488, (HARD GOLD)
TYPE II CODE C, CLASS
1.27
- TERMINATION:**
SOLDER COATED WITH
SN63A
PER J-STD-006
- CURRENT RATING:**
1 AMP MAX PER MIL-
DTL-32139
- CONTACT RESISTANCE:**
71 MILLIOHM MAX
(71mV DROP MAX) @
1.0 AMPS PER MIL-
DTL-32139
- PERFORMANCE:**
PRODUCT FAMILY
TESTED TO AND PASSED
THE PERFORMANCE
SPECIFICATIONS OF
TABLE VIII OF MIL-DTL-
32139



ACTUAL SIZE



NOTE:

DIMENSIONS IN [] ARE IN MILLIMETERS UNLESS OTHERWISE NOTED AND ARE FOR REFERENCE ONLY

M C S S L D W	THIRD ANGLE
	-TOLERANCES-
	UNLESS OTHERWISE NOTED
	DIMENSIONS IN INCHES
2	PL DEC \pm .01
3	PL DEC \pm .005
4	PL DEC \pm .0005
	ANGLES \pm 1°

THIS DRAWING CONTAINS CONFIDENTIAL AND PROPRIETARY INFORMATION WHICH IS THE PROPERTY OF OMNETICS CONNECTOR CORP. THIS DOCUMENT MAY NOT, IN WHOLE OR IN PART, BE DUPLICATED, OR DISCLOSED FOR ANY PURPOSE, WITHOUT WRITTEN PERMISSION FROM OMNETICS CONNECTOR CORP.

DFTM. AAS	DATE 05-14-04
CHK'D.	DATE
APP'D.	DATE

TITLE: (65) SOCKET FEMALE
Bi-Lobe® CONNECTOR

OMNETICS
CONNECTOR CORPORATION
7260 COMMERCE CIRCLE EAST
MINNEAPOLIS, MN 55432
WWW.OMNETICS.COM

CAGE CODE 61873
DWG NO. A29700-065
SHEET 1 OF 1
SCALE: 2.5:1
REV J