

# MATERIALS & SPECIFICATIONS

HOUSING:  
ALUMINUM 6061-T6, NICKEL PLATE PER SAE-AMS-2404

INSULATOR:  
LIQUID CRYSTAL POLYMER (LCP) PER ASTM D5138

CONTACTS:  
COPPER ALLOY PER MIL-DTL-32139, GOLD PLATED PER ASTM B488, (HARD GOLD) TYPE II CODE C, CLASS 1.27

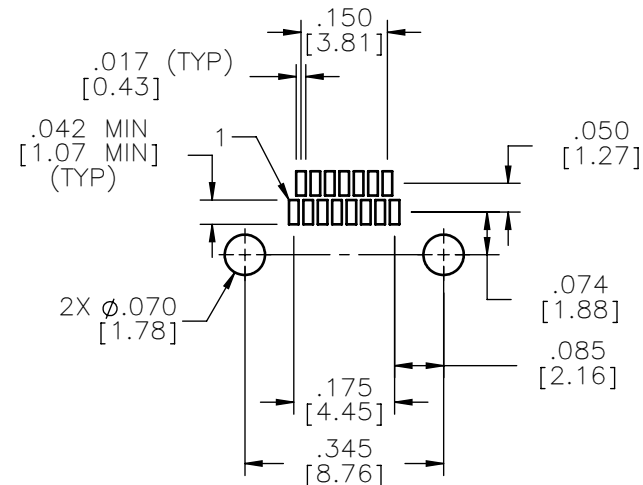
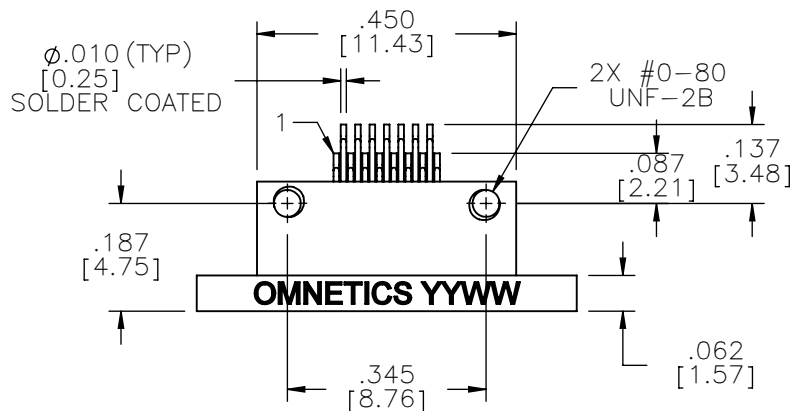
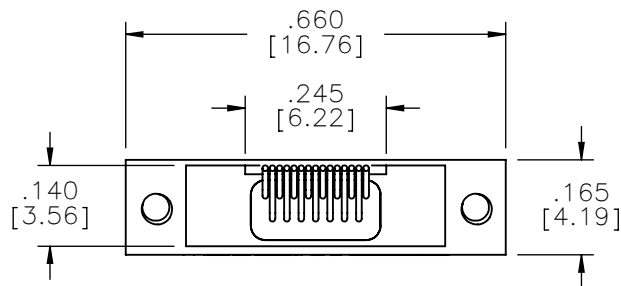
TERMINATION:  
SOLDER COATED WITH SN63A PER J-STD-006

CURRENT RATING:  
1 AMP MAX PER MIL-DTL-32139

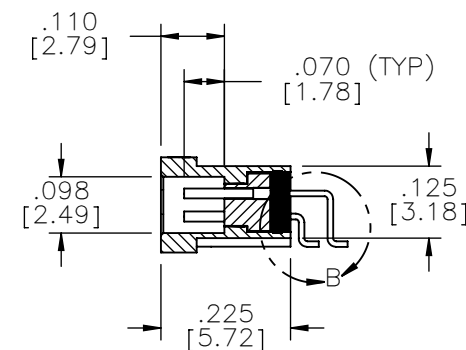
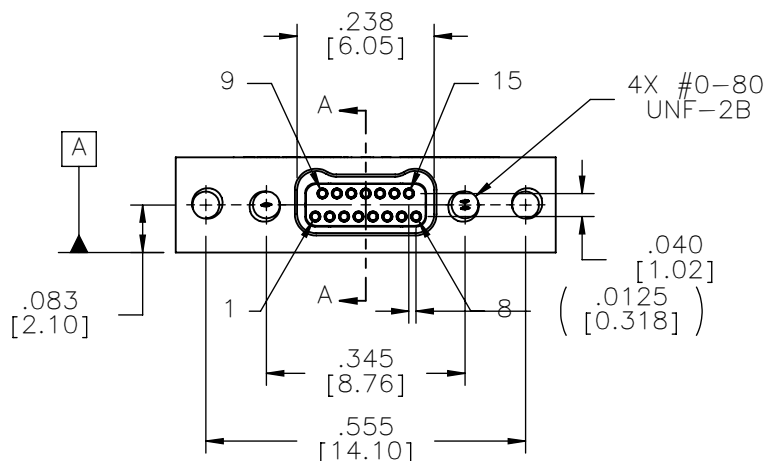
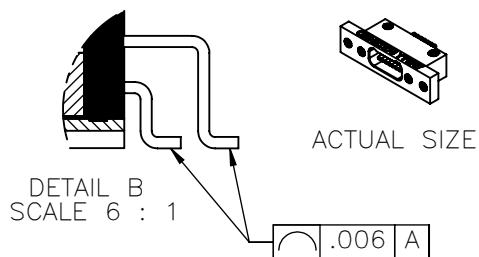
CONTACT RESISTANCE:  
71 MILLIOHM MAX (71mV DROP MAX) @ 1.0 AMPS PER MIL-DTL-32139

PERFORMANCE:  
PRODUCT FAMILY TESTED TO AND PASSED THE PERFORMANCE SPECIFICATIONS OF TABLE VIII OF MIL-DTL-32139

PART NO.	A29700-015	REV	ECO	DATE	APP
		J	102565	05-09-16	TLM



SUGGESTED PAD LAYOUT



SECTION A-A

NOTE:

DIMENSIONS IN [ ] ARE IN MILLIMETERS UNLESS OTHERWISE NOTED AND ARE FOR REFERENCE ONLY

MCS SOPM SOPM SOPM	THIRD ANGLE
	-TOLERANCES-
	UNLESS OTHERWISE NOTED
	DIMENSIONS IN INCHES
2	PL DEC ± .01
3	PL DEC ± .005
4	PL DEC ± .0005
	ANGLES ± 1°

THIS DRAWING CONTAINS CONFIDENTIAL AND PROPRIETARY INFORMATION WHICH IS THE PROPERTY OF OMNETICS CONNECTOR CORP. THIS DOCUMENT MAY NOT, IN WHOLE OR IN PART, BE DUPLICATED, OR DISCLOSED FOR ANY PURPOSE, WITHOUT WRITTEN PERMISSION FROM OMNETICS CONNECTOR CORP.

DFTM.	AAS	DATE	05-14-04
CHK'D.		DATE	
APP'D.		DATE	

TITLE:  
**(15) SOCKET FEMALE**  
**Bi-Lobe® CONNECTOR**

**OMNETICS**  
CONNECTOR CORPORATION  
7260 COMMERCE CIRCLE EAST  
MINNEAPOLIS, MN 55432  
WWW.OMNETICS.COM

CAGE CODE	<b>61873</b>
DWG NO.	<b>A29700-015</b>
SHEET 1 OF 1	REV J
SCALE:	3:1