

# MATERIALS & SPECIFICATIONS

PART NO.	A29300-025	REV	ECO	DATE	APP
		J	102617	05-25-16	TLM

HOUSING:  
ALUMINUM 6061-T6, NICKEL  
PLATE PER SAE-AMS-2404

INSULATOR:  
LIQUID CRYSTAL POLYMER  
(LCP) PER ASTM D5138

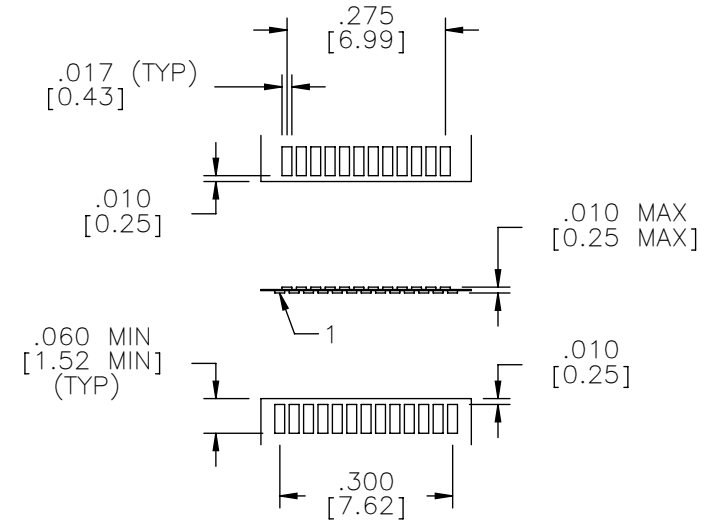
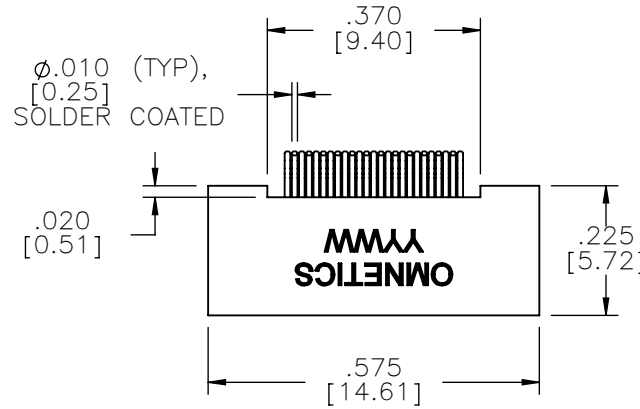
CONTACTS:  
COPPER ALLOY PER MIL-DTL-  
32139, GOLD PLATED PER  
ASTM B488, (HARD GOLD)  
TYPE II CODE C, CLASS 1.27

TERMINATION:  
SOLDER COATED WITH SN63A  
PER J-STD-006

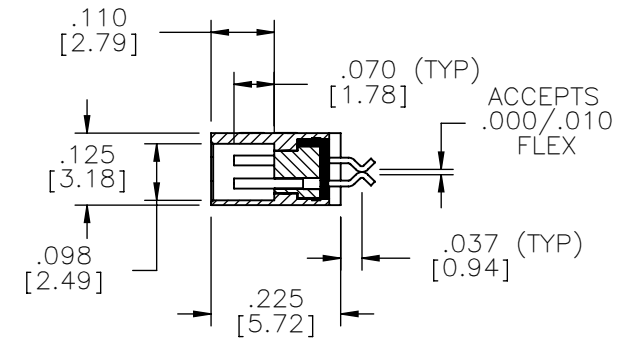
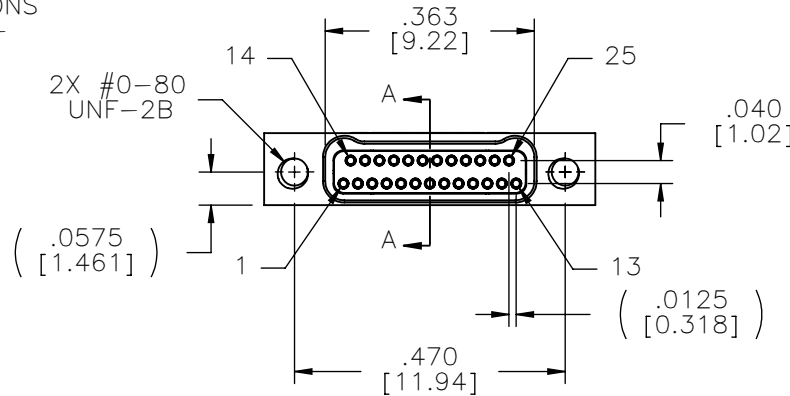
CURRENT RATING:  
1 AMP MAX PER MIL-DTL-  
32139

CONTACT RESISTANCE:  
71 MILLIOHM MAX (71mV  
DROP MAX) @ 1.0 AMPS PER  
MIL-DTL-32139

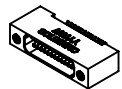
PERFORMANCE:  
PRODUCT FAMILY TESTED TO  
AND PASSED THE  
PERFORMANCE SPECIFICATIONS  
OF TABLE VIII OF MIL-DTL-  
32139



SUGGESTED PAD LAYOUT



SECTION A-A



ACTUAL SIZE

NOTE:

DIMENSIONS IN [ ] ARE IN MILLIMETERS UNLESS OTHERWISE NOTED AND ARE FOR REFERENCE ONLY

MATERIALS	THIRD ANGLE
	-TOLERANCES-
	UNLESS OTHERWISE NOTED
	DIMENSIONS IN INCHES
METHODS	2 PL DEC ± .01
	3 PL DEC ± .005
	4 PL DEC ± .0005
	ANGLES ± 1°

THIS DRAWING CONTAINS CONFIDENTIAL AND PROPRIETARY INFORMATION WHICH IS THE PROPERTY OF OMNETICS CONNECTOR CORP. THIS DOCUMENT MAY NOT, IN WHOLE OR IN PART, BE DUPLICATED, OR DISCLOSED FOR ANY PURPOSE, WITHOUT WRITTEN PERMISSION FROM OMNETICS CONNECTOR CORP.	
DFTM. AAS	DATE 05-10-04
CHK'D.	DATE
APP'D.	DATE
TITLE: (25) SOCKET FEMALE Bi-Lobe® CONNECTOR	

**OMNETICS**  
CONNECTOR CORPORATION  
7260 COMMERCE CIRCLE EAST  
MINNEAPOLIS, MN 55432  
WWW.OMNETICS.COM

CAGE CODE 61873	
DWG NO. A29300-025	
SHEET 1 OF 1	REV J
SCALE: 3:1	