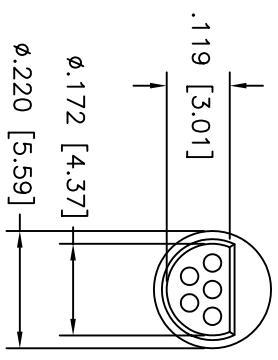
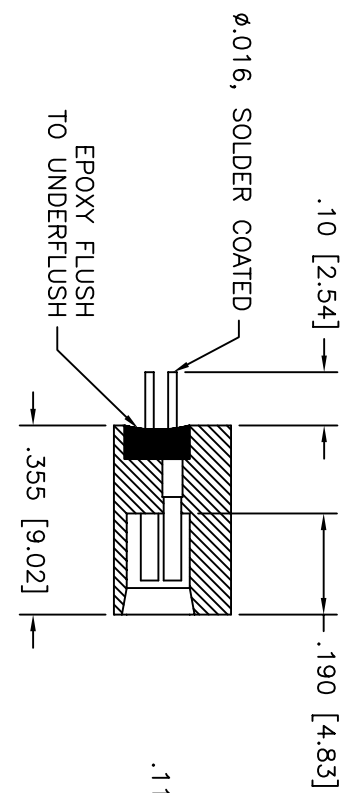
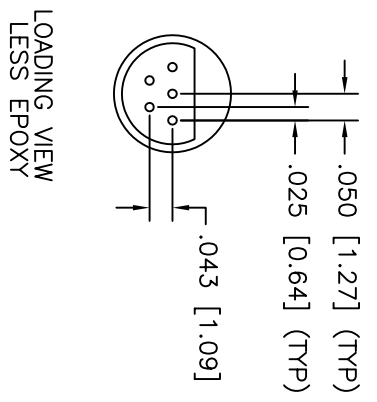


MATERIALS & SPECIFICATIONS

INSULATOR: LIQUID CRYSTAL POLYMER(LCP) PER ASTM D5138  
 CONTACT: COPPER ALLOY PER MIL-DTL-83513, GOLD PLATE PER ASTM B488, (HARD GOLD) TYPE II CODE C, CLASS 1.27  
 TERMINATION: COATED WITH SN63A PER J-STD-006  
 CURRENT CAPACITY 3 AMP MAX  
 CONTACT RESISTANCE 65 MILLIOHM MAX  
 PERFORMANCE: TESTED TO AND PASSED THE PERFORMANCE SPECIFICATIONS OF TABLE VII OF MIL-DTL-83513

PART NO.	A22014-001	REV	ECO	DATE	APP
		B	94225	01-16-07	TLM



REF: OMNETICS

CATALOG DESCRIPTION: MCS-05-DD

FOR LATEST REVISION OF DRAWING  
 SEE OMNETICS WEBSITE: WWW.OMNETICS.COM

MCS	-TOLERANCES- UNLESS OTHERWISE NOTED DIMENSIONS IN INCHES		OMNETICS CONNECTOR CORPORATION		TITLE: (5) SOCKET FEMALE CIRCULAR CONNECTOR	CAGE CODE 61873
	2 PL DEC	± .01	DFTM. TEP	DATE		
3 PL DEC	± .005	CHK'D.	DATE			
4 PL DEC	±	APP'D.	DATE			
ANGLES	±					

SHEET 1 OF 1	REV B
SCALE: 4:1	